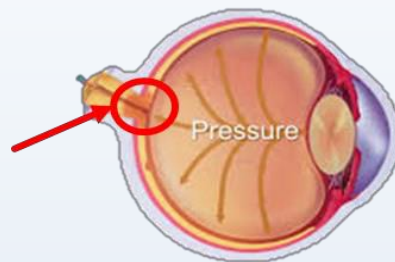


# mesvision® Promotes Glaucoma Awareness

Visit [MESVision.com](http://MESVision.com) for more information

**Glaucoma** is a disease characterized by elevated eye pressure which damages the **eye's optic nerve** and can result in vision loss and blindness. There are currently treatments, but **no cures**.<sup>3</sup>

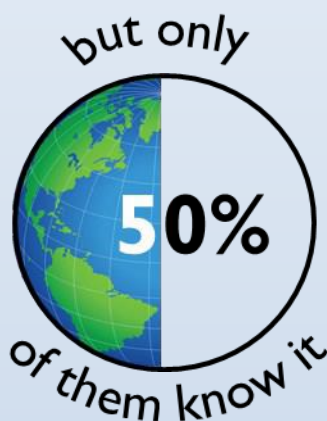


Approximately 64,000,000 people worldwide have glaucoma.<sup>2</sup>

**2nd**  
most common cause of blindness Worldwide and in the United States.<sup>2</sup>



Approximately 3,000,000 Americans have glaucoma.<sup>2</sup>



## **Risk Factors:**

- Family history of Glaucoma<sup>1</sup>
- Over 60 years old<sup>2</sup>
- Being of Asian or African descent<sup>1</sup>

**15%**  
of people with glaucoma become blind in at least one eye within 20 years.<sup>4</sup>

### **Sources:**

1—*Glaucoma*. American Optometric Association. [www.aoa.org/Glaucoma.xml](http://www.aoa.org/Glaucoma.xml)

2—*Glaucoma*. MMPV. [www.merckmanuals.com/professional/SerchResults?query=glaucoma](http://www.merckmanuals.com/professional/SerchResults?query=glaucoma)

3—*Facts about glaucoma*. National Eye Institute. [https://nei.nih.gov/health/glaucoma/glaucoma\\_facts](https://nei.nih.gov/health/glaucoma/glaucoma_facts) 4—*Mayo Clinic*.

<https://www.mayoclinic.org/disease-conditions/glaucoma/basics/definition/con-20024042?p=1>